



TETRA DUPLEXER WITH 8 WAYS SPLITTER

RX 450 ÷ 455 MHz / TX 460 ÷ 465 MHz

T06991405

POLOMARCONI.IT



POLOMARCONI offers a very wide range of wireless products.
Our products can be tailored according to the customer's need.

PMR

Electrical Specifications

Impedance (Ω)	50
Continuous Max. Power (W)	$> 4 \times 50$ ⁽¹⁾
Operating Temp. Range ($^{\circ}\text{C}$)	$-20 \pm +55$

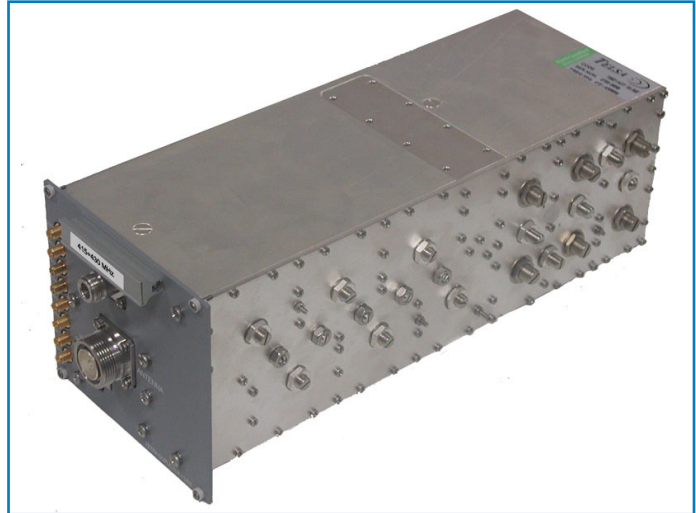
RX Section

Center Frequency (MHz)	414.5
Bandwidth (MHz)	5
Return loss (dB)	≥ 15
Gain (dB)	$4.3 \div 5.3$
Noise figure (dB)	≤ 3.4
IP3 (dBm)	> 8
1 dB Compression Point (dBm)	> -2
Atten. in Tx band (dB)	> 80
Out of band rejection (dB)	> 40

TX Section

Center Frequency (MHz)	424.5
Bandwidth (MHz)	5
Return loss (dB)	≥ 15
Insertion Loss (dB)	≤ 1.1
Atten. in RX band (dB)	> 80

⁽¹⁾ using external combiners



Mechanical Specifications

Antenna connector	7/16 f
TX connector	N f
RX connector	8 x SMA f
Dimensions (mm)	3U x 142 x 350
Weight (Kg)	7
Material	Aluminium alloy
Finishing	Silver plating



Made in Italy. We reserve the right to modify these data without any notice.