



# TETRA DUPLEXER

RX BAND: 450 ÷ 455 MHz / TX BAND: 460 ÷ 465 MHz

T06211487

POLOMARCONI.IT

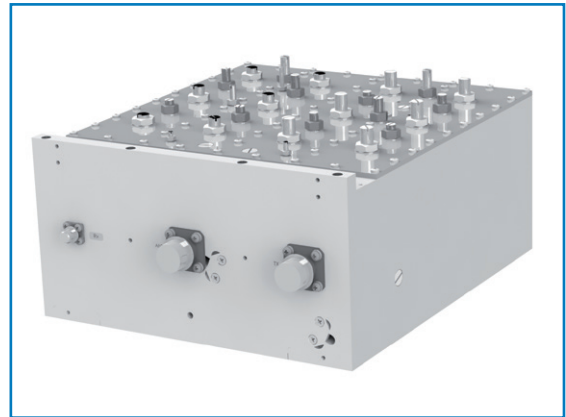


POLOMARCONI offers a very wide range of wireless products.  
Our products can be tailored according to the customer's need.

PMR

## Electrical Specifications

Frequency Band (MHz)	RX	450÷455
	TX	460÷465
Impedance ( $\Omega$ )		50
Bandwidth (MHz)		5
Frequency Spacing (MHz)		10
Insertion Loss (dB)		$\leq 1.3$
Return Loss (dB)		$> 18$
Continuous Input Power (dBm)		$\leq 53$
TX Attenuation (dB) @ RX frequencies		$\geq 80$
RX Attenuation (dB) @ TX frequencies		$\geq 80$
Out of Band Attenuation (dB) in working band	65 ÷ 80 MHz	$\geq 80$
	145 ÷ 175 MHz	$\geq 80$
	530 ÷ 4000 MHz	$\geq 30$
IP3 (dBm) with 2 × 50 W carriers		$\geq 93$
Operating Temp. Range (°C)		$-10^{\circ} \div +70^{\circ}$
Enviromental Conditions		ETS 300-019-1-0
Safety		EN60950
EMC standard compliance		ETSI EN 301 489-18



## Mechanical Specifications

Antenna connector	N f
TX connector	N f
RX connector	SMA f
Dimensions (mm)	246 × 217 × 129
Weight (kg)	6
Front panle colour	anodized colorless



Made in Italy. We reserve the right to modify these data without any notice.