



2 CH UHF RX DOUBLE CAVITY COMBINER IN STAR POINT CONFIGURATION

T06090601

POLOMARCONI.IT



POLOMARCONI offers a very wide range of wireless products.
Our products can be tailored according to the customer's need.

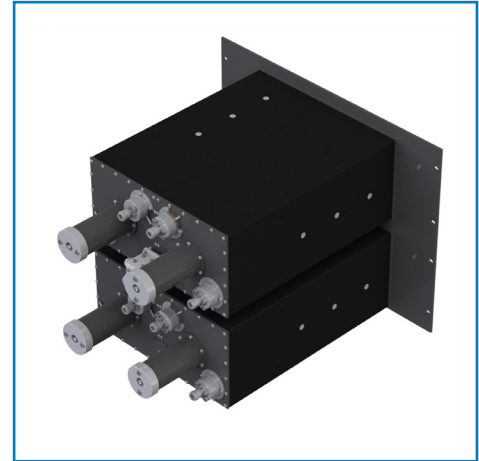
ATC

Electrical Specifications

Frequency Band (MHz)	225 ÷ 400
Impedance (Ω)	50
Return Loss (dB)	≥ 15
I.L. (dB) @ ch. spacing: $f_0 \pm 1\% f_0$	2.5
Isolation (dB) @ ch. spacing: $f_0 \pm 1\% f_0$	> 46
Filter Selectivity (dB) at mid band with I.L. : 2 dB	@ $f_0 \pm 1\% f_0$ > 45 @ $f_0 \pm 2\% f_0$ > 60
Continuous Max. Power (W) per channel	100
Extended Temp. Range ($^{\circ}\text{C}$)	-10 ÷ +55
Operating Environment	ETS 300 019-1-2 ETS 300 019-2-3 Class 3.1E
Electrical Safety	IEC 60950-1 EN 60950-1
EMC	ETSI EN 301 489-1 489-22

Electrical Specifications

Connectors	Nf
Dimensions	8U x 19" x 485mm
Weight (kg)	< 20
Front Panel Color	RAL 9011
Transportation and Handling	ETS 300 019-2-2 Class 2.2



Electric Schematics

