



# VHF 4 CHANNELS HYBRID COMBINER

## 100 W PER CHANNEL

118 ÷ 144 MHz

T06030411

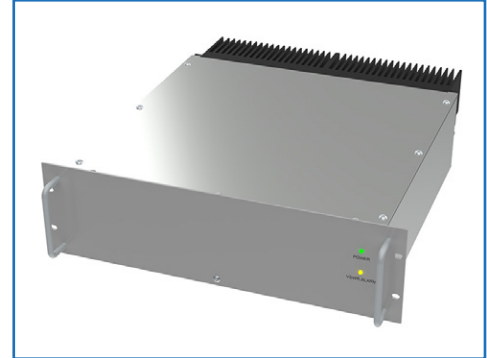
POLOMARCONI.IT

POLOMARCONI offers a very wide range of wireless products.  
Our products can be tailored according to the customer's need.

ATC

### Electrical Specifications

Frequency Band (MHz)	118 ÷ 144
Impedance ( $\Omega$ )	50
N° of INPUT CHANNELS	4
Insertion Loss (dB)	$\leq 6.5$
VSWR	$< 1.5$
Isolation (dB) channel to channel	$\geq 20$
Max Continuous Input Power (W) all ports simultaneously	100



### Mechanical Specifications

RF Connectors	N f
Dimensions	3U x 19" x 520mm
Weight (kg)	$< 14$
Front Panel Colour	RAL 7035

### Environmental Specifications

Relative Humidity	$< 95\%$ @ 40°C not condensing
Vibration	IEC 60068-2-6 0.3mm double amplitude 2g, 10 ÷ 55 Hz 1 octave / min total test period 30min
Shock	IEC 60068-2-27 30g for 11ms 18 shocks in 3 positions
MTBF (hours)	$\geq 440000$
Environmental Conditions	IP20
Operating Temp. Range (°C)	-20 ÷ +55
Electrical Safety	EN 60950 EN 60215
EMI / EMC	ETSI EN 301 489-1 /-18