



POLOMARCONI.IT

UHF 2 CHANNELS HYBRID

100 W per Channel, Optional Harmonic Suppression Kit

T06010605

ATC

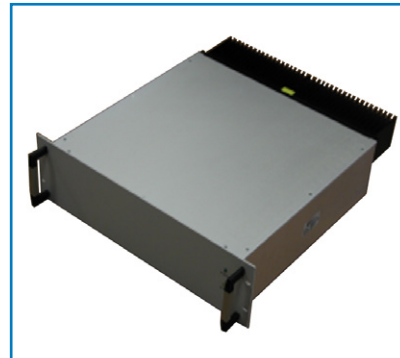
POLOMARCONI offers a very wide range of wireless products. Our products can be tailored according to the customer's need.

Electrical Specifications

Frequency Band (MHz)	225 ÷ 400	
Impedance (Ω)	50	
VSWR	< 1.5	
Max continuous Input Power (W) all ports simultaneously	100	
Minimum Input Power for VSWR and Alarms (W)	5	
Power Supply (V _{AC})	230	
Insertion Loss (dB)	≤ 5	
Isolation (dB) Channel to Channel	≥ 65	
	VSWR default threshold	≥ 2
Alarm (output with pull-up resistor)	alarm OFF (V)	≥ 10
	alarm ON (V)	< 1
Current Absorption (mA)	< 80	
IM3 (dBc) 2 × 47 dBm	< - 80	
Harmonic Suppression (dBc)	≥ 55	
Operating Temp. Range (°C)	-20 ÷ +55	
Electrical Safety	EN 60950 EN 60215	
EMI / EMC	ETSI EN 301 489-1 /-18	

DESCRIPTION

T06010605 are ultra high-power hybrid combiners capable of handling up to 100W per input. They represent the best technical solution in the market to combine up to 4 high power transmitters. The presence of isolators (with high IMD performances) ensures protection of Power Amplifiers in case the antenna breaks. Furthermore, such event is promptly evidenced by the VSWR meter, which generates an alarm signaled by a yellow LED on the front panel and also detectable on a pin of the SUB-D connector. Thanks to the employment of hybrids, all channels can be tuned- at 25 KHz steps - to any frequency across the UHF band without any constraint in terms of minimum distance between channels, which is a typical limitation of cavity combiners. A Harmonics Suppression Kit is available as optional.



Mechanical Specifications

RF Connectors	N f
Alarm Connectors	DIN 9 pin male
Dimensions	3U × 19" × 520mm
Weight (kg)	10.5
Front Panel Colour	RAL 7047
Relative Humidity	< 95% @ 40°C not condensing
Vibration	IEC 60068-2-6 0.3mm double amplitude 2g, 10 ÷ 55 Hz 1 octave / min, total test period 30min
Shock	IEC 60068-2-27 30g for 11ms 18 shocks in 3 positions
MTBF (hours)	≥ 440000
Enviromental Conditions	IP20

Harmonic Suppression Kit

Insertion Loss (dB)	+ 0.5
Harmonic Suppression (dBc)	+ 25