



UHF MANUAL DOUBLE CAVITY FILTER

225 ÷ 400 MHz, High Selectivity, 2HU

T05120678

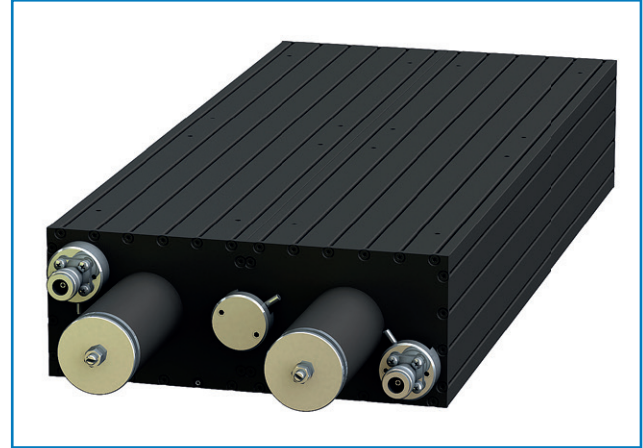
POLOMARCONI.IT

POLOMARCONI offers a very wide range of wireless products. Our products can be tailored according to the customer's need.

ATC

Electrical Specifications

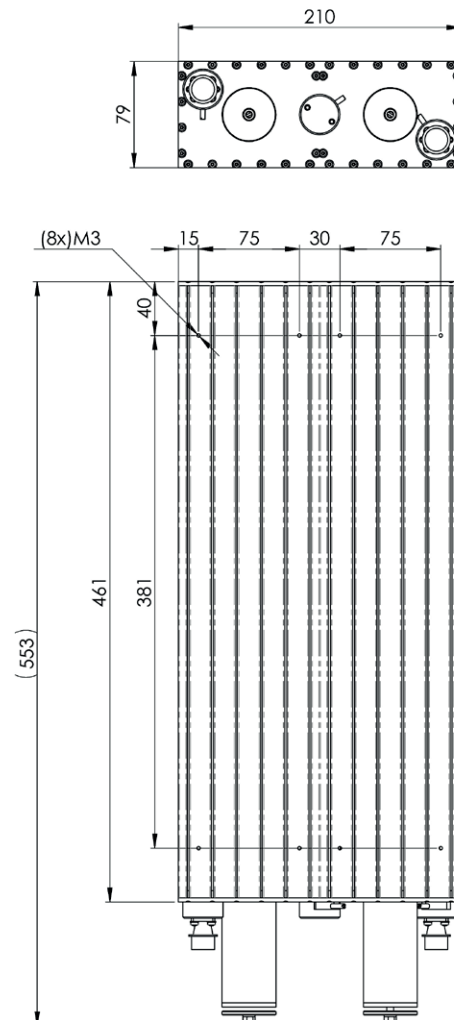
Frequency band (MHz)	225 ÷ 400
Impedance (Ω)	50
Insertion Loss (dB)	≤ 3
Return Loss (dB) (@ f_0 , with Insertion Loss: 2 dB)	≥ 14
Continuous Max. Power (W)	200
Attenuation (dB) with Insertion Loss: 2.5 dB @ $f_0 \pm 1.2\text{MHz}$	≥ 25
Manual Tuning Control	with internal mechanism
Operating Temp. Range ($^{\circ}\text{C}$)	-20 ÷ +55
Operating Environment	ETSI EN 300 019-1-3 standard (A2), class 3.1E



Mechanical Specifications

Connectors	N f
Dimensions max. (included connectors, mm)	79 x 210 x 553
Weight (kg)	< 5
Material	Aluminium Alloy
Internal Finishing	Silver Plating
Colour	RAL 9011

Dimensions (mm)



Made in Italy. We reserve the right to modify these data without any notice.