



VHF OMNIDIRECTIONAL ANTENNA SYSTEM

108 ÷ 174 MHz, Single Polarization, 4 dBi, Tower Mounting

T02380402

POLOMARCONI.IT

POLOMARCONI offers a very wide range of wireless products.
Our products can be tailored according to the customer's need.

ATC

Electrical Specifications

Frequency band (MHz) 108 ÷ 174

Impedance (Ω) 50

VSWR
108 ÷ 174 MHz $\leq 2:1$
117 ÷ 144 MHz $\leq 1.5:1$

Continuous Max. Power (W) 500

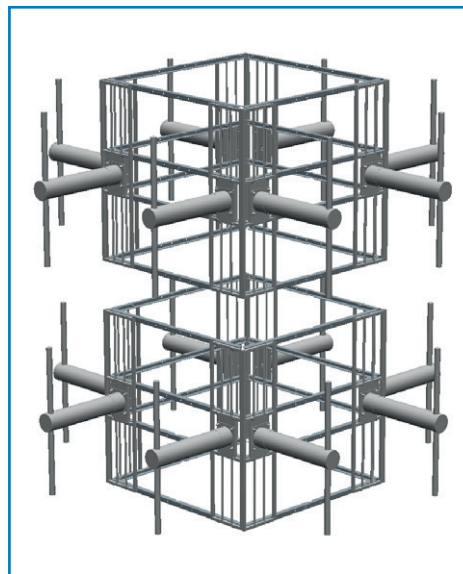
Polarization linear: vertical

Gain (dBi)
108 ÷ 174 MHz ≥ 2.5 (typ. 5)
117 ÷ 144 MHz ≥ 4 (typ. 6)

HPBW ($^\circ$) - E-plane 40 ± 4

HPBW ($^\circ$) - H-plane omni ± 2 dB

Lightning Protection DC grounded



Mechanical Specifications

Connectors N f

Dimensions (mm) 2750 x 2750 x 2850

Weight (kg) < 365

Wind Load (N) @ 150 km/h 1600

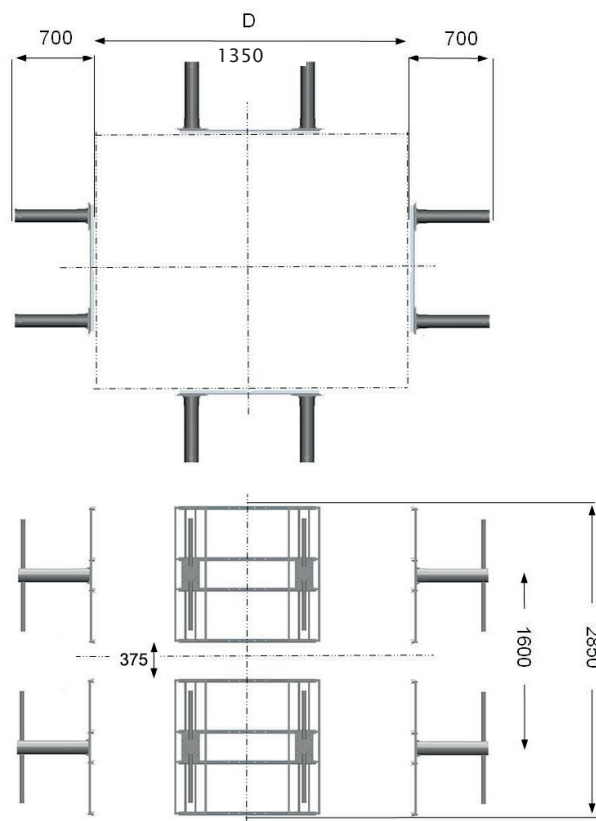
Colour RAL 7035 (light grey)

Material Hot dip galvanized steel

Mounting on tower by bracket

Operating Temp. Range ($^\circ\text{C}$) $-40 \div +70$

Dimensions (mm)





VHF OMNIDIRECTIONAL ANTENNA SYSTEM

108 ÷ 174 MHz, Single Polarization, 4 dBi, Tower Mounting

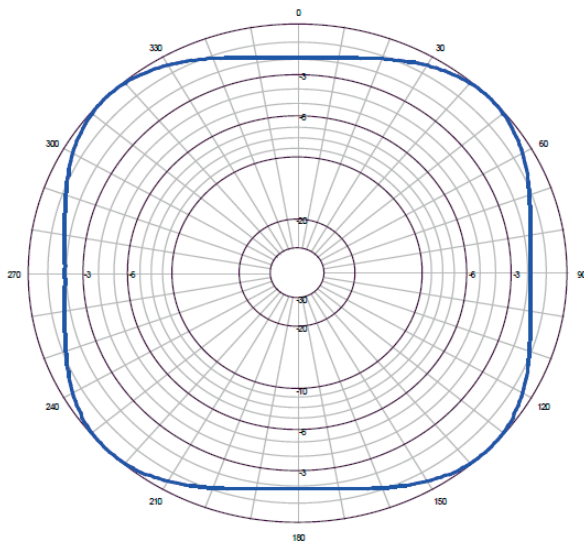
T02380402

POLOMARCONI.IT

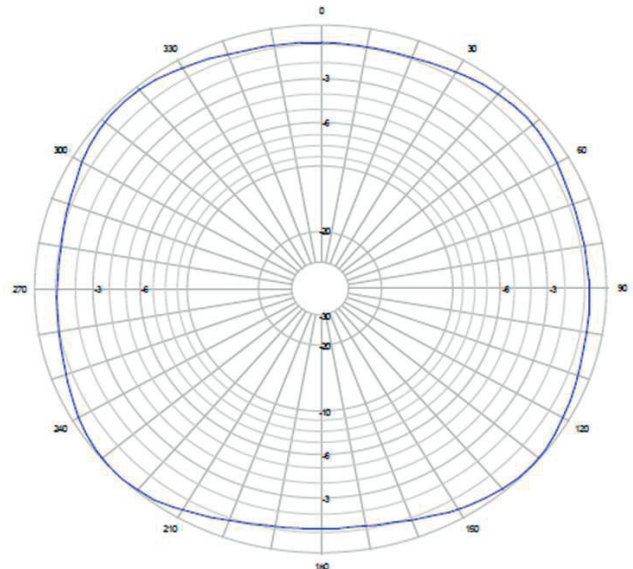
POLOMARCONI offers a very wide range of wireless products.
Our products can be tailored according to the customer's need.

ATC

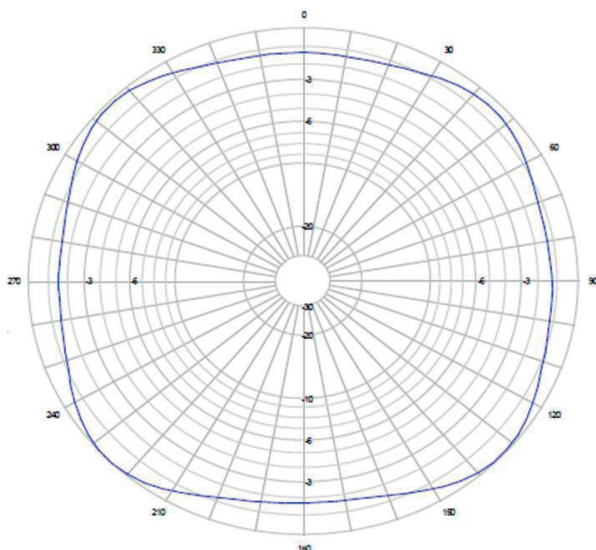
Radiation Patterns: Horizontal Plane



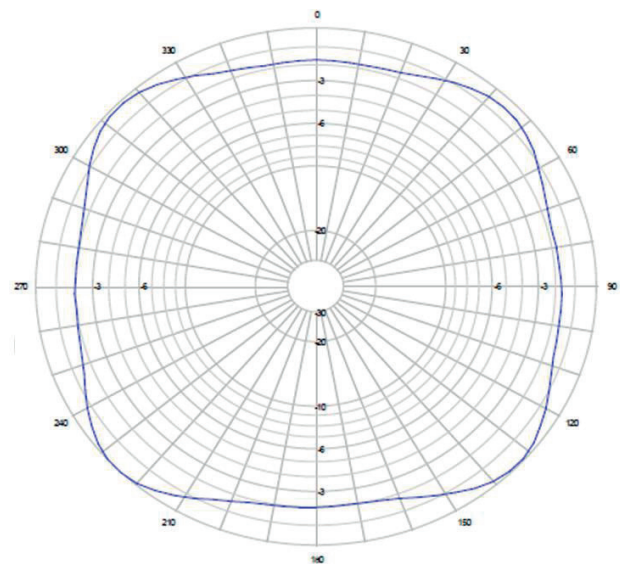
Linear polarization - Vertical component
Horizontal Plane
Freq = 108.000 MHz
 ± 3 dB Beamwidth = 0.00° (Horizontal Plane)



Linear polarization - Vertical component
Horizontal Plane
Freq = 117.000 MHz
 ± 3 dB Beamwidth = 0.00° (Horizontal Plane)



Linear polarization - Vertical component
Horizontal Plane
Freq = 127.000 MHz
 ± 3 dB Beamwidth = 0.00° (Horizontal Plane)



Linear polarization - Vertical component
Horizontal Plane
Freq = 137.000 MHz
 ± 3 dB Beamwidth = 0.00° (Horizontal Plane)



VHF OMNIDIRECTIONAL ANTENNA SYSTEM

108 ÷ 174 MHz, Single Polarization, 4 dBi, Tower Mounting

T02380402

POLOMARCONI.IT

POLOMARCONI offers a very wide range of wireless products.
Our products can be tailored according to the customer's need.

ATC

Radiation Patterns: Horizontal Plane

