



VHF OMNI ANTENNA SYSTEM

117 ÷ 144 MHz

T02220401

POLOMARCONI.IT

POLOMARCONI offers a very wide range of wireless products. Our products can be tailored according to the customer's need.

ATC

Electrical Specifications

Frequency band (MHz)	117 ÷ 144
Impedance (Ω)	50
VSWR	< 2
Polarization	linear: vertical
HPBW ($^\circ$) - E-plane	65 ± 3
HPBW ($^\circ$) - H-plane	omni ± 2 dB
Gain (dBi)	2.2
Continuous Max Power (W)	500
Lightning Protection	DC grounded

Mechanical Specifications

Connector	Nf
n° Bays	1
Antenna Height (mm)	1300
Tower Dimensions (mm)	\square 500
Wind resistance (Km/h)	200
Weight (Kg)	30
Mounting	through 4 terns of \varnothing 14 mm holes for each panel
Operating Temp. Range ($^\circ$ C)	-40 ÷ +70
Storage Temp. Range ($^\circ$ C)	-50 ÷ +80

DESCRIPTION:

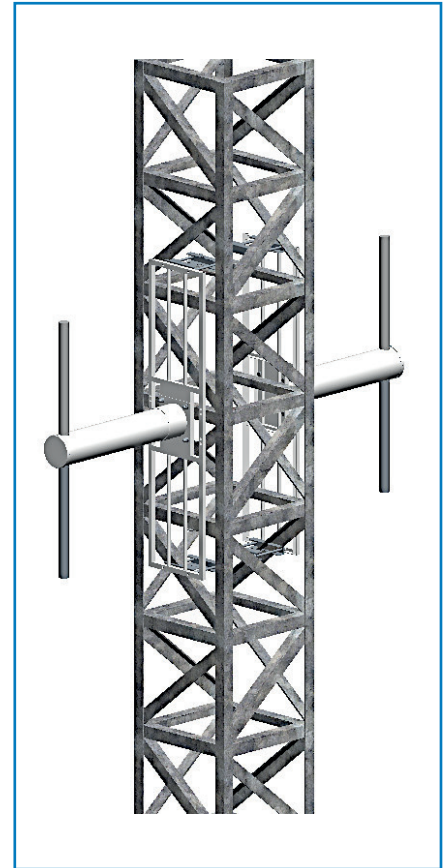
VHF 2 panel antenna system composed back-to-back to achieve omnidirectional pattern. Suitable to be mounted around towers or on masts, these systems are especially convenient when many antennas are already installed on a tower and only available space for further antenna deployment is on tower sides.

Omnidirectional solution with 2 dBi or higher gain [using more bays] have been standardized and can be ordered directly.

When instead asymmetric radiation patterns are to be achieved or installation site constraints call for ad hoc solutions, custom arrays are composed to adjust to the specific scenario. Typical such instances happen when the tower is so wide that an ad hoc specific number of panels must be employed to achieve the desired omnidirectional pattern.

SPECIAL FEATURES:

- Broadband: 117÷144 MHz
- Polarization: Vertical
- Different Gain solutions available
- Omnidirectional arrays
- Low Wind Area



DIMENSIONS (mm)

