



# MULTIBAND ROOFTOP ULTRA LOW PROFILE MULTI MIMO ANTENNA 4x4

T01841802

POLOMARCONI.IT

POLOMARCONI offers a very wide range of wireless products.  
Our products can be tailored according to the customer's need.

TRANSPORT

## Electrical Specifications

Frequency bands 2G/3G/4G/5G and Wi-Fi	694 ÷ 790 MHz
	790 ÷ 870 MHz
	870 ÷ 960 MHz
	1427 ÷ 1511 MHz
	1710 ÷ 2170 MHz
	2300 ÷ 2700 MHz
	3300 ÷ 3800 MHz

## GENERAL DATA

Impedance ( $\Omega$ ) 50

VSWR	694 ÷ 960 MHz	< 2.4:1
	1427 ÷ 1511 MHz	< 2.0:1
	1710 ÷ 2170 MHz	< 2.0:1
	2300 ÷ 2700 MHz	< 2.0:1
	3300 ÷ 3500 MHz	< 2.4:1
	3500 ÷ 3800 MHz	< 2.2:1

Continuous Max. Composite Power (W) 40

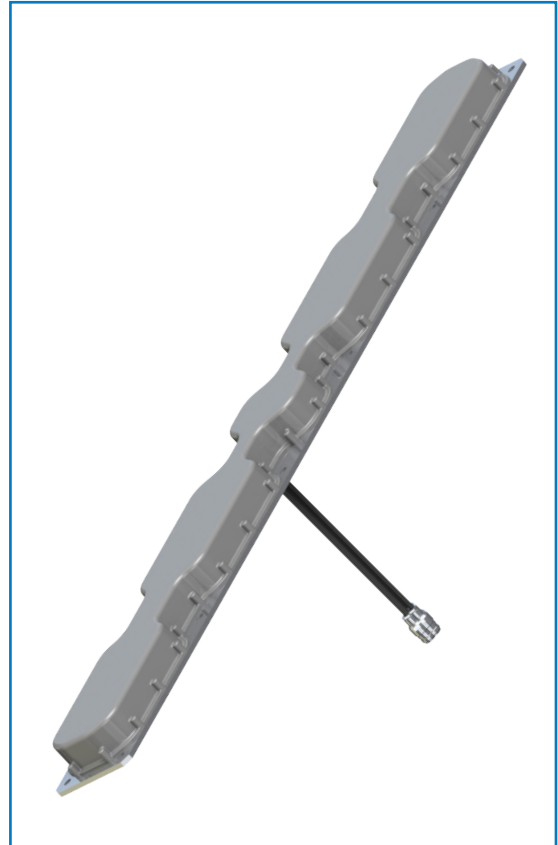
Polarization linear vertical

Gain (dBi) (*)	700/800/900 MHz	> 5
	1427 ÷ 1511 MHz	> 6
	1710 ÷ 2170 MHz	> 7
	2300 ÷ 2500 MHz	> 7
	2500 ÷ 3300 MHz	> 7
	3300 ÷ 3800 MHz	> 8

Isolation between ports (dB)	frequency $\leq$ 1000 MHz	> 15
	frequency > 1000 MHz	> 20

Operating Temp. Range ( $^{\circ}\text{C}$ ) -40 ÷ +85

\*Cable losses not factored



## DESCRIPTION

Railway multiband rooftop 4 ports MIMO antenna for 2G/3G/4G/5G cellular, Wi-Fi 2.4 GHz and 5 GHz bands.

## Mechanical Specifications

Connectors 2G/3G/4G/5G and Wi-Fi bands 4 x 200mm of low loss RF coaxial cable pigtail with N/f connector

Dimensions (Height from installation surface x Width x Depth, mm) 40 x 110 x 1000

Weight (kg) abt. 2.6

Materials Base Aluminum with SURTEC 650 galvanic treatment  
Radome High impact polycarbonate

Mounting The antenna needs to be installed in longitudinal position with respect to the wind/driving direction

Ground plane requirement Recommended dimensions 1000x1000mm; it's advisable to keep the mounting metallic conductive surface clean and free from paint for an optimal electrical contact



# MULTIBAND ROOFTOP ULTRA LOW PROFILE MULTI MIMO ANTENNA 4x4

T01841802

POLOMARCONI.IT

POLOMARCONI offers a very wide range of wireless products.  
Our products can be tailored according to the customer's need.

TRANSPORT

## Environmental Specifications

**ATMOSPHERIC and CLIMATIC CONDITIONS according to EN50155:2018-05 and EN60068**

**MECHANICAL CONDITIONS according to EN50155:2018-05 and EN61373**

**EMC according to EN50121-3-2:2016**

**RoHS and REACH compliant**

**FLAMMABILITY RATING according to EN45545-2:2013/A1:2015**

**IP rating: IP69**

**DC GROUNDING, HIGH CURRENT PROTECTION according to NF EN 50153, UIC 758,  
NF EN 50388 and NF EN 50123, EN50124-1**

Short-circuit currents flow / time before breaking

70 kA / 5 ms – 40 kA / 100 ms (DC)  
31.5 kA / 10 ms – 15 kA / 100 ms (AC)

## MOUNTING FLANGE

Mounting flange holes are indicated in the relevant mounting instruction document.