



SINGLE BAND DIRECTIVE ANTENNA

790 ÷ 960 MHz, 13 dBi Gain

T01490902

POLOMARCONI.IT

POLOMARCONI offers a very wide range of wireless products. Our products can be tailored according to the customer's need.

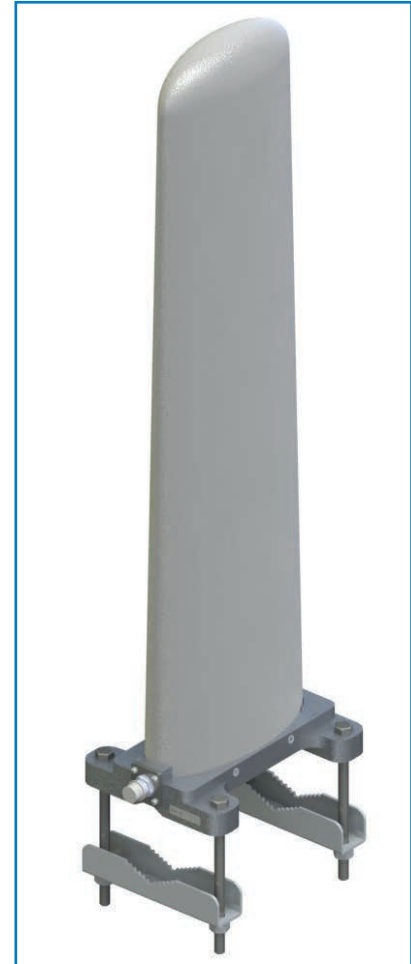
M2M

Electrical Specifications

Frequency band (MHz)	790 ÷ 960
Impedance (Ω)	50
VSWR	$\leq 1.5:1$
Polarization	linear: vertical
Gain (dBi)	13
HPBW (<1GHz)	
H-Plane (degrees)	49 ± 1
V-Plane (degrees)	39 ± 1
HPBW (>1GHz)	
H-Plane (degrees)	44 ± 1
V-Plane (degrees)	34 ± 1
Front to Back Ratio (dB)	> 30
Continuous Max Power (W)	500
Operating Temp. Range ($^{\circ}\text{C}$)	-40 ÷ +70
Grounding	DC grounded

Mechanical Specifications

Connector	Nf	
Dimensions (mm) (without fixing)	220 x 170 x 791	
Weight (kg)	4	
Wind Load @ 150 km/h (N)	Front	185
	Side	142
Max Wind Speed (km/h)	160	
Colour	RAL 7035	
Radome	Fiberglass	
Mounting	on pole $\varnothing 30 \div 80$ mm	



Dimensions (mm)

