



EXTERNAL DIRECTIONAL WIDE BAND PANEL ANTENNA with Nf connector

790 ÷ 960 MHz / 1710 ÷ 2170 MHz / 2500 ÷ 2700 MHz

T01201807

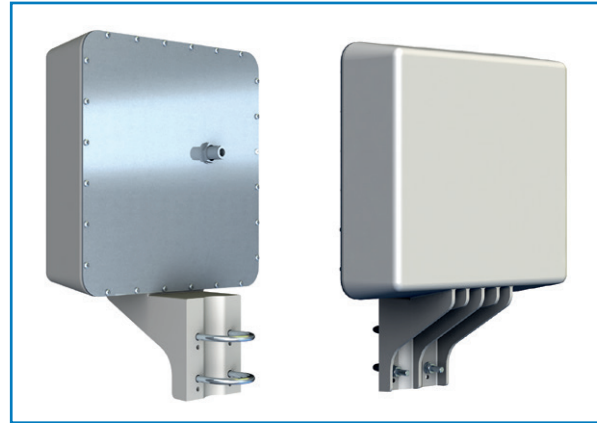
POLOMARCONI.IT

POLOMARCONI offers a very wide range of wireless products.
Our products can be tailored according to the customer's need.

M2M

Electrical Specifications

Frequency bands (MHz)	790 ÷ 960 1710 ÷ 2170 2500 ÷ 2700
Impedance (Ω)	50
VSWR	790 ÷ 960 MHz $\leq 2.0:1$ 1710 ÷ 2170 MHz $\leq 2.0:1$ 2500 ÷ 2700 MHz $\leq 2.5:1$
Continuous Max. RF Power (W)	10
Polarization	linear vertical
Maximum gain (dBi)	≥ 6
HPBW ($^\circ$) - H-plane	790 ÷ 960 MHz 60 ± 5 1710 ÷ 2170 MHz 60 ± 5 2500 ÷ 2700 MHz 50 ± 5
HPBW ($^\circ$) - E-plane	790 ÷ 960 MHz 70 ± 5 1710 ÷ 2170 MHz 50 ± 5 2500 ÷ 2700 MHz 45 ± 5
Operating Temp. Range ($^\circ\text{C}$)	$-25 \div +55$
Storage Temp. Range ($^\circ\text{C}$)	$-45 \div +60$



Mechanical Specifications

Connector	Nf
Dimensions (height x width x depth, mm)	350 x 250 x 122
Weight (kg)	1.2
Colour (radome)	grey
Mounting	on a master tube with $\varnothing 30 \div \varnothing 40 \text{mm}$ OR on a wall
Kit Mounting bracket for mast tube $\varnothing 40 \div \varnothing 60$ (T16040045)	Not Included
IP Protection	55

Dimensions (mm)

