



EXTERNAL DIRECTIONAL PANEL ANTENNA

790 ÷ 960 MHz

T01201501

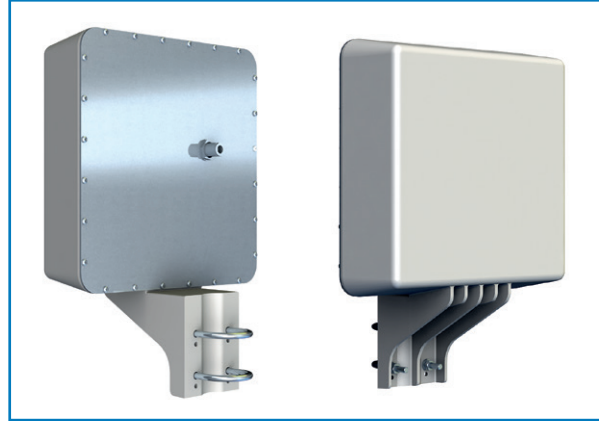
POLOMARCONI.IT

POLOMARCONI offers a very wide range of wireless products. Our products can be tailored according to the customer's need.

M2M

Electrical Specifications

Frequency band (MHz)	790 ÷ 960
Impedance (Ω)	50
VSWR	
790 ÷ 925 MHz	< 1.5
925 ÷ 960 MHz	< 2
Continuous Max. RF Power (W)	30
Polarization	linear vertical
Gain (dBi)	9
HPBW ($^\circ$) - H-plane	60 ± 5
HPBW ($^\circ$) - E-plane	70 ± 5
Operating Temp. Range ($^\circ\text{C}$)	$-25 \div +65$
Storage Temp. Range ($^\circ\text{C}$)	$-45 \div +70$



Mechanical Specifications

Connector	N f
Dimensions (height x width x depth, mm)	350 x 250 x 72
Weight (kg)	1.2
Max. Wind Speed (km/h)	160
Colour	grey
radome	grey
Mounting	on a master tube with $\varnothing 30 \div \varnothing 40 \text{mm}$
Kit Mounting bracket for mast tube $\varnothing 40 \div \varnothing 60$ (T16040045)	Not Included
IP Protection	55

Dimensions (mm)

