



OMNI TETRA ANTENNA 400 4E

380 ÷ 430 MHz, 8.2dBi

T01141429

POLOMARCONI.IT

POLOMARCONI offers a very wide range of wireless products. Our products can be tailored according to the customer's need.

PMR

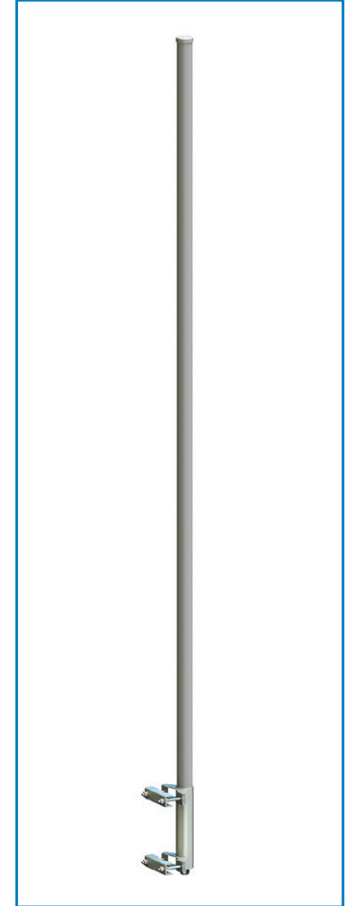
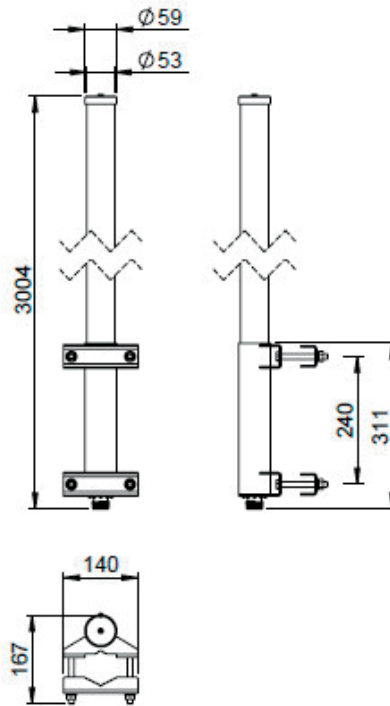
Electrical Specifications

Frequency band (MHz)	380 ÷ 430
Impedance (Ω)	50
VSWR	≤ 1.5
Continuous Max. Power (W)	200
Polarization	linear vertical
Gain (dBi)	> 6.5
HPBW ($^\circ$) - H-plane	omni
HPBW ($^\circ$) - E-plane typ.	13
Lightning Protection	DC grounded all metallic parts
Operating Temp. Range ($^\circ\text{C}$)	$-40 \div +70$

Mechanical Specifications

Connector	7/16" female
Dimensions (mm)	$\varnothing 53 \times 3004$
Weight (Kg)	8
Wind Load (N) @ 150 km/h	200
Colour	traffic white RAL 9016
Mounting	on pole $\varnothing 40 \div 60$ mm

Dimensions (mm)



P/N Type of Tilt

T01141429T4 (optional)	4° Electrical tilt
T01141429T5 (optional)	5° Electrical tilt
T01141429T6	6° Electrical tilt
T01141429T8 (optional)	8° Electrical tilt

