



VHF OMNIDIRECTIONAL ANTENNA

108 ÷ 156 MHz, Single Polarization, 7.5 dBi
1 Input, Hard Environmental Sites

T01140406

POLOMARCONI.IT

POLOMARCONI offers a very wide range of wireless products. Our products can be tailored according to the customer's need.

ATC

Electrical Specifications

Frequency band (MHz)	108 ÷ 156
Impedance (Ω)	50
VSWR	$\leq 2.0:1$
Continuous Max. Power (W)	< 200
Polarization	linear vertical
Gain (dBi) typ.	7.5
HPBW ($^\circ$) - H-plane	omni ± 1 dB
HPBW ($^\circ$) - E-plane	13 ± 1
Lightning Protection	DC grounded

Mechanical Specifications

Connector	Nf
Dimensions (mm)	
Length	8129
Radome diameter	$\varnothing 77 \div 202$
Weight (kg)	96
Wind load @ 220 km/h (N)	< 2800
Radome material	Fiberglass
Colour	RAL 7035 (grey)
Mounting	flange $\varnothing 434$ mm
Operating Temp. Range ($^\circ\text{C}$)	-40 ÷ +70

DESCRIPTION:

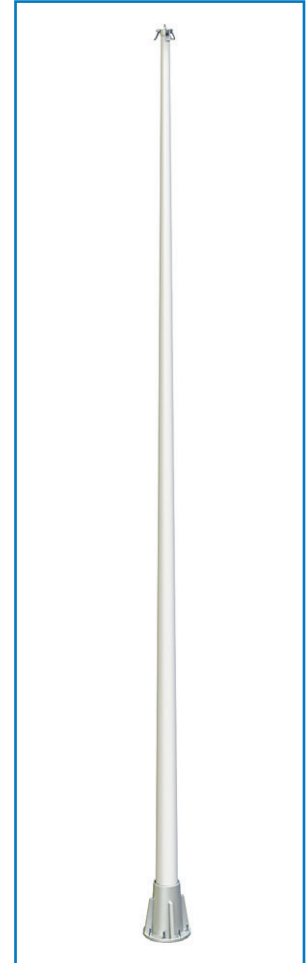
Special collinear antennas suitable for Hard Environmental Sites [HES].

These antennas have been optimized to operate under extreme ambient conditions — ice, wind and low temperature exhibiting a strikingly robust design.

The external radome is a conic structure made in thick fiberglass extrusion and the base flange is molded in aluminum.

SPECIAL FEATURES:

- Broadband: 108÷156 MHz
- Nr. input: 1
- Omnidirectional radiation
- High power: 200 W
- Protected against lightning
- Very rugged construction
- Hard Environmental Site
- Designed for support guy line ropes



MOUNTING FLANGE (mm)

