



UHF/VHF/UHF OMNIDIRECTIONAL ANTENNA

108 ÷ 156 MHz / 225 ÷ 400 MHz, 2 dBi

T01133006

POLOMARCONI.IT

POLOMARCONI offers a very wide range of wireless products. Our products can be tailored according to the customer's need.

ATC

Electrical Specifications

Frequency band (MHz)	VHF 108 ÷ 156
	UHF 225 ÷ 400
Impedance (Ω)	50
VSWR	$\leq 2:1$
Continuous Max. Power (W)	200
Polarization	linear vertical
Gain (dBi) typ.	2
HPBW ($^\circ$) - H-plane	omni ± 1 dB
HPBW ($^\circ$) - E-plane	80 ± 5
Isolation (dB) between inputs	≥ 27
Lightning Protection	DC grounded

Mechanical Specifications

Connectors	3 x Nf
Dimensions (mm)	
Length	5135
Radome diameter	$\varnothing 135 \div 207$
Weight (kg)	92
Wind load @ 150 km/h (N)	1230
Colour	RAL 7035 (grey)
Radome material	Fiberglass
Mounting	flange $\varnothing 434$ mm
Operating Temp. Range ($^\circ\text{C}$)	-40 ÷ +70

De-Icing Specifications

*Peak Power (W)	4600 max
Feeding (V_{AC})	220
Heater System	Hot Air Blower
Control Interfaces	RS485 ETHERNET
Sensors	Internal Temperature External Temp. & Humidity
Interface Conn.	RJ45
Power Conn.	3+PE
Removable De-icing System	T16990023

* Peak Power consumption is function of external temperature

DESCRIPTION

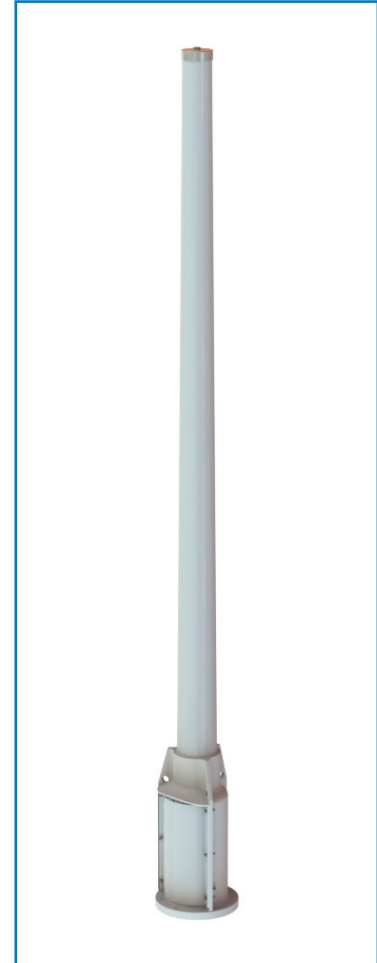
Special collinear antennas suitable for hard environmental site.

This antenna has been designed to withstand at the extreme ambiental conditions: ice, wind and temperature with internal removable de-icing system on request.

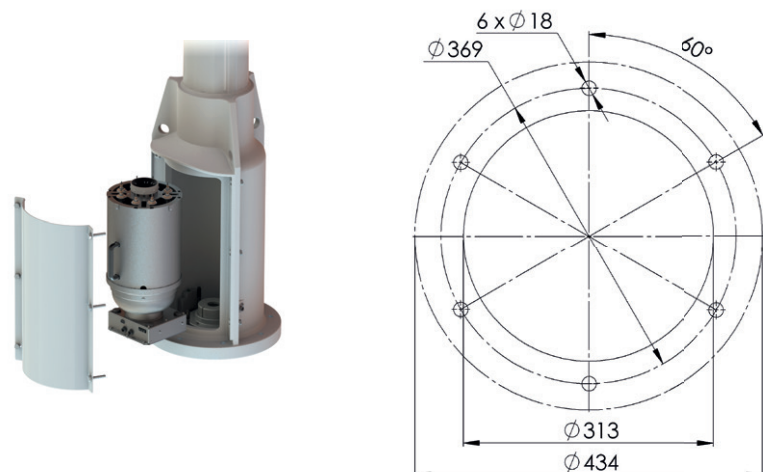
The external radome is a conic structure made in thick fiberglass extrusion, and the base flange is molded in aluminum. It's operating in dual band VHF and UHF.

SPECIAL FEATURES:

- Dual band: 108÷156 MHz
225÷400 MHz
- Nr. input: 3 (1 VHF, 2 UHF)
- Omnidirectional radiation
- High power: 200 W
- Protected against lightning
- Very rugged construction
- Internal removable de-icing system (on request)



MOUNTING FLANGE (mm)



Made in Italy. We reserve the right to modify these data without any notice.