



# VHF/UHF/VHF OMNIDIRECTIONAL ANTENNA

108 ÷ 156 MHz / 225 ÷ 400 MHz  
Single Polarization, 2 dBi, 3 Inputs

T01131602

POLOMARCONI.IT

POLOMARCONI offers a very wide range of wireless products. Our products can be tailored according to the customer's need.

ATC

## Electrical Specifications

|                               |     |                 |
|-------------------------------|-----|-----------------|
| Frequency band (MHz)          | VHF | 108 ÷ 156       |
|                               | UHF | 225 ÷ 400       |
| Impedance ( $\Omega$ )        |     | 50              |
| VSWR                          |     | $\leq 2$        |
| Continuous Max. Power (W)     |     | 200             |
| Polarization                  |     | linear vertical |
| Gain (dBi)                    |     | 2               |
| HPBW ( $^\circ$ ) - H-plane   |     | omni $\pm 1$ dB |
| HPBW ( $^\circ$ ) - E-plane   |     | $80 \pm 5$      |
| Isolation (dB) between inputs |     | $\geq 27$       |
| Lightning Protection          |     | DC grounded     |

## Mechanical Specifications

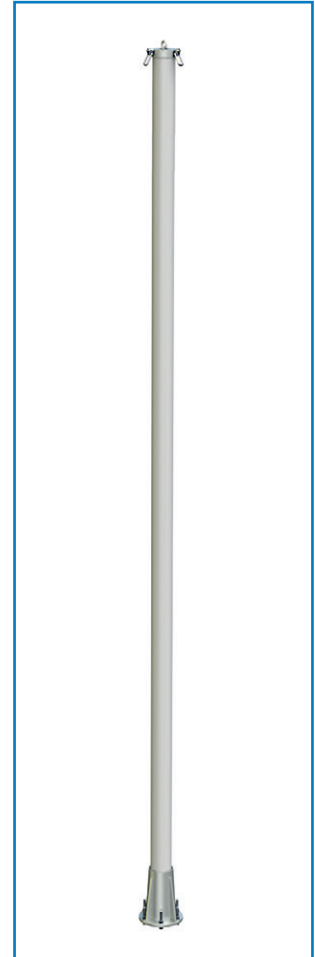
|  |                 |                             |
|--|-----------------|-----------------------------|
| Connectors                                 |                 | 3 x Nf                      |
| Dimensions (mm)                            | Length          | 5333                        |
|  | Radome diameter | $\varnothing 127$           |
| Weight (kg)                                |                 | 33                          |
| Wind load @ 150 km/h (N)                   |                 | 820                         |
| Colour                                     |                 | RAL 7035 (grey)             |
| Radome material                            |                 | Fiberglass                  |
| Mounting                                   |                 | flange $\varnothing 265$ mm |
| Operating Temp. Range ( $^\circ\text{C}$ ) |                 | $-40 \div +70$              |
| Storage Temp. Range ( $^\circ\text{C}$ )   |                 | $-50 \div +80$              |

## DESCRIPTION:

Collinear antenna with three isolated elements in a common fiberglass radome. Suitable to be installed in standard sites. Dual band antenna operating in both VHF and UHF frequency ranges.

## SPECIAL FEATURES:

- Dual band: 108÷156 MHz / 225÷400 MHz
- Nr. input: 3 (2 VHF, 1 UHF)
- Omnidirectional radiation
- High power: 200 W
- Protected against lightning
- Very rugged construction
- Designed for support guy line ropes



## MOUNTING FLANGE (mm)

