



VHF/UHF OMNIDIRECTIONAL ANTENNA

108 ÷ 156 MHz / 225 ÷ 400 MHz
Single Polarization, 2 dBi, 2 Inputs

T01121601

POLOMARCONI.IT

POLOMARCONI offers a very wide range of wireless products. Our products can be tailored according to the customer's need.

ATC

Electrical Specifications

Frequency band (MHz)	VHF	108 ÷ 156
	UHF	225 ÷ 400
Impedance (Ω)		50
VSWR		$\leq 2:1$
Continuous Max. Power (W)		200
Polarization		linear vertical
Gain (dBi)		2
HPBW ($^\circ$) - H-plane		omni ± 1 dB
HPBW ($^\circ$) - E-plane		80 ± 5
Isolation (dB) between inputs		≥ 27
Lightning Protection		DC grounded

Mechanical Specifications

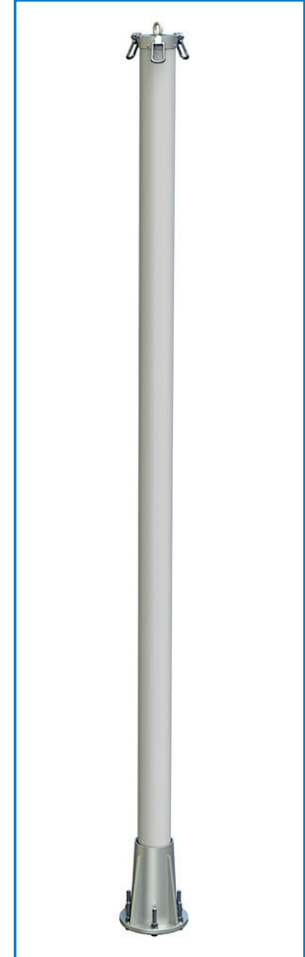
Connector		2 Nf
Dimensions (mm)		
Length		3219
Radome diameter		$\varnothing 127$
Weight (kg)		26
Wind load @ 200 km/h (N)		650
Colour		RAL 7035 (grey)
Radome material		Fiberglass
Mounting		flange $\varnothing 265$ mm
Operating Temp. Range ($^\circ\text{C}$)		$-40 \div +70$

DESCRIPTION:

Collinear antenna with two isolated elements inside the radome to connect one VHF and one UHF radio. Suitable to be installed in standard sites.

SPECIAL FEATURES:

- Dual band: 108÷156 MHz / 225÷400 MHz
- Nr. input: 2 (1 VHF, 1 UHF)
- Omnidirectional radiation
- High power: 200 W
- Protected against lightning
- Very rugged construction
- Designed for support guy line ropes



MOUNTING FLANGE (mm)

