



UHF OMNIDIRECTIONAL ANTENNA

225 ÷ 400 MHz, Single Polarization, 2 dBi, 2 Inputs

T01120601

POLOMARCONI.IT

POLOMARCONI offers a very wide range of wireless products. Our products can be tailored according to the customer's need.

ATC

Electrical Specifications

Frequency band (MHz)	225 ÷ 400
Impedance (Ω)	50
VSWR	≤ 2
Polarization	linear vertical
Gain (dBi) typ.	2
HPBW ($^\circ$) - H-plane	omni ± 1 dB
HPBW ($^\circ$) - E-plane	80 ± 5
Isolation (dB) between inputs	≥ 27
Continuous Max. Power (W)	200
Lightning Protection	DC grounded

Mechanical Specifications

RF Connectors	2 x Nf
Dimensions (mm)	
Length	2424
Radome diameter	$\varnothing 127$
Weight (kg)	23
Wind load @ 160 km/h (N)	389
Max wind velocity (km/h)	200
Color	RAL 7035 (grey)
Material	
Radome	UV resistant fiberglass
Rad. elements	Aluminium anticorrosion
Base flange	Weatherproof aluminium
Screws and nuts	Stainless steel
Mounting	flange $\varnothing 265$ mm
Operating Temp. Range ($^\circ\text{C}$)	-40 ÷ +70

DESCRIPTION

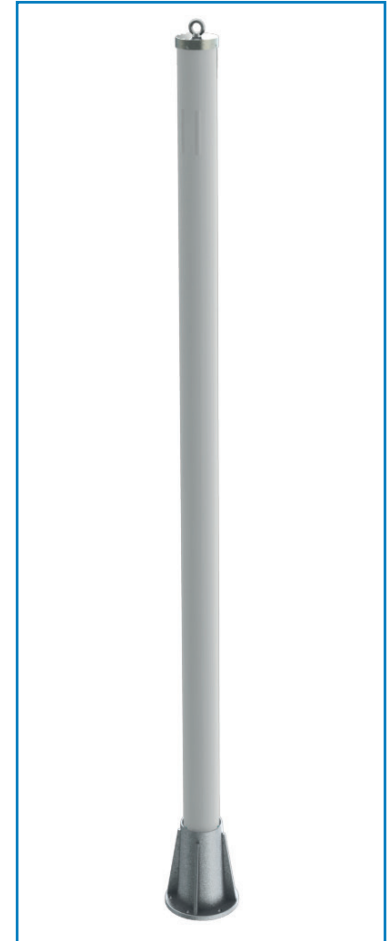
Collinear antenna with two isolated elements in a common fiberglass radome. Suitable to be installed in standard sites.

SPECIAL FEATURES

- Broadband: 225÷400 MHz
- Nr. input: 2
- Omnidirectional radiation
- High power: 200 W
- Protected against lightning
- Very rugged construction

SCOPE OF SUPPLY

Antenna is provided with O-ring for the base flange. Galvanized steel screws, nuts and washer for the installation are provided



Mounting Flange (mm)

