



MONO BAND GPS ANTENNA

1575.42 MHz

MLD1-R

POLOMARCONI.IT

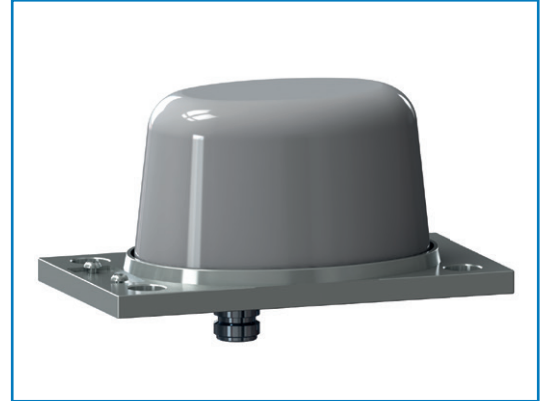
POLOMARCONI offers a very wide range of wireless products. Our products can be tailored according to the customer's need.

TRANSPORT

Electrical Specifications

SATELLITE NAVIGATION AND GEOLOCALIZATION BAND

Frequency band (MHz)	1574.42 ÷ 1576.42
Impedance (Ω)	50
Polarization	Right Hand Circular Polarization (RHCP)
Gain (dBic)	≥ 25 (typical 27), @ $T_0=25^\circ\text{C}$, $V_{\text{DC}}=5\text{V}$
Noise Figure (dB)	≤ 2.5 , @ $T_0=25^\circ\text{C}$, $V_{\text{DC}}=5\text{V}$
Operating supply voltage (V_{DC})	3.0 ÷ 7.0
Current consumption (mA)	≤ 35 , @ $T_0=25^\circ\text{C}$, $V_{\text{DC}}=5\text{V}$
Satellite navigation and geolocalization supported systems	GPS



Mechanical Specifications

Connector	TNC female connector
Dimensions (mm)	70 x 80 x 145
Weight (kg)	0.3
Materials	
radome	Lexan EXL 9330 Polycarbonate
base	Aluminium with SURTEC 650 treatment
connectors	Silver plated brass
Mounting	on metallic surface (250x250 mm minimum)
Operating Temp. Range ($^\circ\text{C}$)	-40 ÷ +70

Environmental Specifications

ATMOSPHERIC and CLIMATIC CONDITIONS according to EN 50155 and EN 60068

MECHANICAL CONDITIONS according to EN 50155

EMC according to EN 50121-3-2

HIGH VOLTAGE PROTECTION according to EN 50153 and EN 50124-1

DC GROUNDING

RoHS 2011/65/EU compliant

FLAMMABILITY RATING according to EN 45545-2

IP rating: IP67

MOUNTING FLANGE

Mounting: on a conductive surface with a minimum size of 250x250 mm; it's advisable to keep the mounting surface clean for a better electrical contact.

Mounting with a hole of 16.5 mm of diameter

Advantage: amplifier included; there is no need of an external low noise GPS amplifier as the internal GPS signal is already amplified.