



VHF/UHF/VHF OMNIDIRECTIONAL ANTENNA

118 ÷ 137 MHz / 225 ÷ 400 MHz, 3 Inputs

E01131602

POLOMARCONI.IT

POLOMARCONI offers a very wide range of wireless products. Our products can be tailored according to the customer's need.

ATC

Electrical Specifications

Frequency band (MHz)	VHF	118 ÷ 137
	UHF	225 ÷ 400
Impedance (Ω)		50
VSWR		$\leq 2.0:1$
Continuous Max. Power (W)		500
Polarization		linear vertical
Gain (dBi)		≥ 1
HPBW ($^\circ$) - H-plane		omni ± 1 dB
HPBW ($^\circ$) - E-plane		80 ± 5
Isolation (dB) between inputs		≥ 30
Lightning Protection		DC grounded

Mechanical Specifications

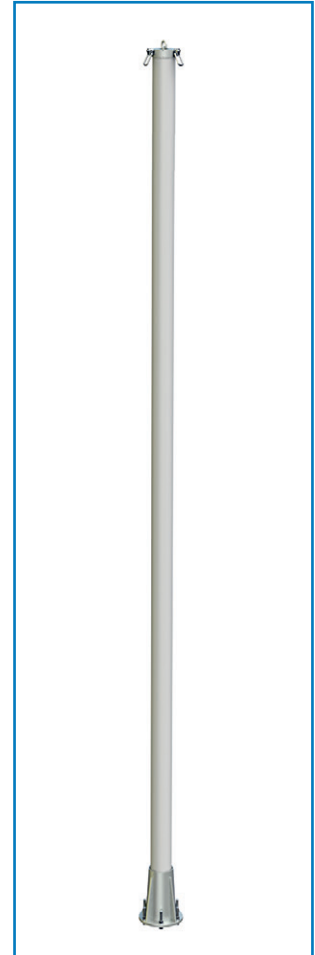
Connectors		3 x Nf
Dimensions (mm)		
Length		5380
Radome diameter		$\varnothing 127$
Weight (kg)		33
Wind load @ 200 km/h (N)		1200
Wind survival (km/h)		220
Colour		RAL 7035 (grey)
Radome material		Fiberglass
Mounting		flange $\varnothing 265$ mm
Operating Temp. Range ($^\circ\text{C}$)		$-40 \div +70$

DESCRIPTION:

Collinear antenna with three isolated elements in a common fiberglass radome. Suitable to be installed in standard sites. Dual band antenna operating in both VHF and UHF frequency ranges.

SPECIAL FEATURES:

- Dual band: 108÷156 MHz / 225÷400 MHz
- Nr. input: 3 (2 VHF, 1 UHF)
- Omnidirectional radiation
- High power: 200 W
- Protected against lightning
- Very rugged construction
- Designed for support guy line ropes.



MOUNTING FLANGE (mm)

