



VHF OMNIDIRECTIONAL ANTENNA

118 ÷ 137 MHz, 3 Inputs

E01130401

POLOMARCONI.IT

POLOMARCONI offers a very wide range of wireless products. Our products can be tailored according to the customer's need.

ATC

Electrical Specifications

Frequency band (MHz)	118 ÷ 137
Impedance (Ω)	50
VSWR	< 2.0:1
Continuous Max. Power (W)	500
Polarization	linear vertical
Gain (dBi)	≥ 1
HPBW ($^\circ$) - H-plane	omni ± 0.5 dB
HPBW ($^\circ$) - E-plane	80 ± 5
Isolation (dB) between inputs	≥ 30
Lightning Protection	DC grounded

Mechanical Specifications

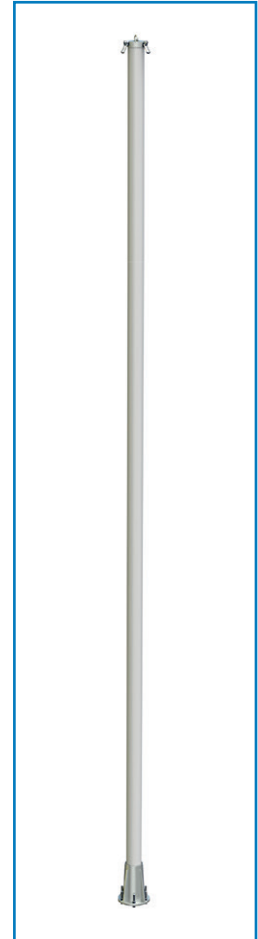
Connectors	3 x Nf
Dimensions (mm)	
Length (without eye bolt)	7000
Radome diameter	$\varnothing 127$
Weight (kg)	40
Wind load @ 200 km/h (N)	1500
Wind survival (km/h)	200
Colour	RAL 7035 (grey)
Radome material	Fiberglass
Mounting	flange $\varnothing 265$ mm
Operation Temp. Range ($^\circ\text{C}$)	$-40 \div +70$

DESCRIPTION:

Collinear antenna with three isolated elements in a common fiberglass radome. Suitable to be installed in standard sites.

SPECIAL FEATURES:

- Broadband: 108÷156 MHz
- Nr. inputs: 3
- Omnidirectional radiation
- High power: 200 W
- Protected against lightning
- Very rugged construction
- Designed for support guy line ropes



MOUNTING FLANGE (mm)

