



DUAL BAND VHF-RST ANTENNA

146 ÷ 165 MHz and 410 ÷ 470 MHz

BTFRD2

POLOMARCONI.IT

POLOMARCONI offers a very wide range of wireless products. Our products can be tailored according to the customer's need.

TRANSPORT

Electrical Specifications

Frequency band (MHz)	146 ÷ 165 410 ÷ 470
Input impedance (Ω)	50
VSWR	< 2.1:1
Continuous Max. Power (W)	30
Polarization	vertical
Gain (dBi)	> 3

Mechanical Specifications

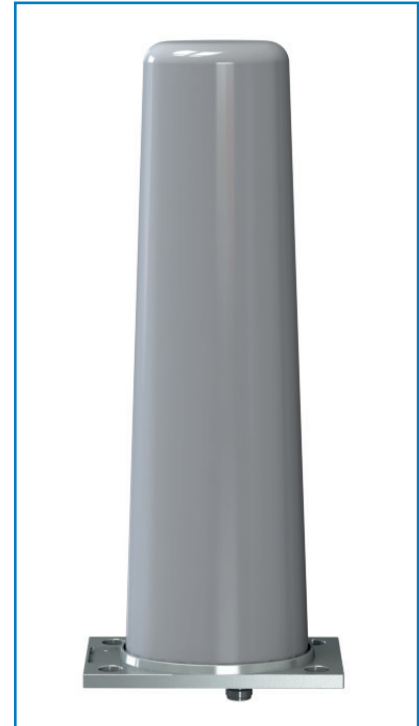
Connector	N female						
Dimensions (mm)	360x80x145						
Total weight (kg)	0.8						
Materials	<table border="0"> <tr> <td>Base</td> <td>Aluminium with SURTEC 650 treatment</td> </tr> <tr> <td>Radome</td> <td>High impact polycarbonate</td> </tr> <tr> <td>Connectors</td> <td>Silver plated brass</td> </tr> </table>	Base	Aluminium with SURTEC 650 treatment	Radome	High impact polycarbonate	Connectors	Silver plated brass
Base	Aluminium with SURTEC 650 treatment						
Radome	High impact polycarbonate						
Connectors	Silver plated brass						
Mounting	on metallic surface (1500x1500 mm minimum)						



Patent n° 1548873

Antenna for train with protective means against high voltages.

Patent has been used by SNCF and by the most important producers of trains.



Product Label



Environmental Specifications

CLIMATIC CONDITIONS according to EN 50155:2017 and EN 60068

Operating Temperature (°C)	-40 ÷ +70
Storage Temperature (°C)	-40 ÷ +70

MECHANICAL CONDITIONS according to EN 50155:2017 and EN 61373

HIGH VOLTAGE PROTECTION according to EN 50124-1

HIGH CURRENT PROTECTION according to EN 50153, UIC 758, UIC 533, EN 50388 and EN 50123

Short-circuit currents flow / time before breaking	40 kA / 100 ms (DC) 15 kA / 100 ms (AC)
--	--

FLAMMABILITY RATING according to EN 45545-2

IP rating: IP67

RoHS 2011/65/EU compliant

MOUNTING FLANGE

Mounting: on a conductive surface with a minimum size of 1500x1500 mm; it's advisable to keep the mounting surface clean for a better electrical contact.

Grounding and high voltage protection: Our antennas have passed the strict SNCF's tests that approved our products as protected against lightning and high-tension voltage thanks to our patented DC and AC grounded system.

Approved by: SNCF, SNCB, TRENITALIA

Made in Italy. We reserve the right to modify these data without any notice.