



# DUPLEXER GSM, DCS, UMTS, Wi-Fi

91500182  
D224-P

POLOMARCONI.IT



POLOMARCONI offers a very wide range of wireless products.  
Our products can be tailored according to the customer's need.

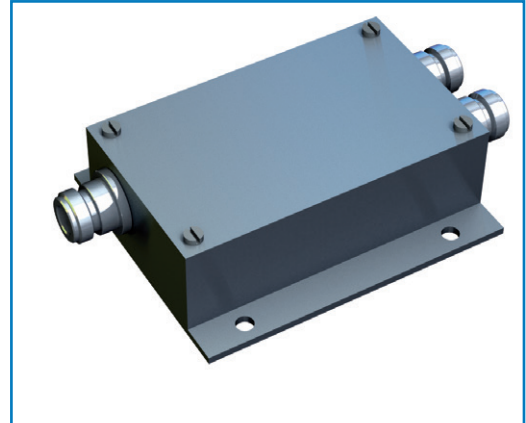
TRANSPORT

## Electrical Specifications

Frequency range (MHz)	Port	GSM	790 ÷ 960
		DCS	1710 ÷ 1880
		UMTS	1920 ÷ 2170
	Port	Wi-Fi	2400 ÷ 2485
Impedance ( $\Omega$ )			50
VSWR			<1.8
Insertion loss (dB)		GSM	<0.7
		DCS	<1.1
		UMTS	<1.6
		Wi-Fi	<1.8
Rejection (dB)	On Wi-Fi	on band GSM - DCS	> 30
		on band UMTS	> 20
	On GSM-DCS-UMTS	on band Wi-Fi	> 25
Isolation (dB)		Wi-Fi versus GSM - DCS	> 30
		UMTS	> 20
	GSM-DCS-UMTS versus	Wi-Fi	> 25
Maximum power (W)			10

## Mechanical Specifications

Type of connection	N f
Connectors	Silver plated brass
Dimensions (mm) with connectors	84x134x32
Weight (kg)	0.3
Body material	Aluminium with SURTEC 650 treatment

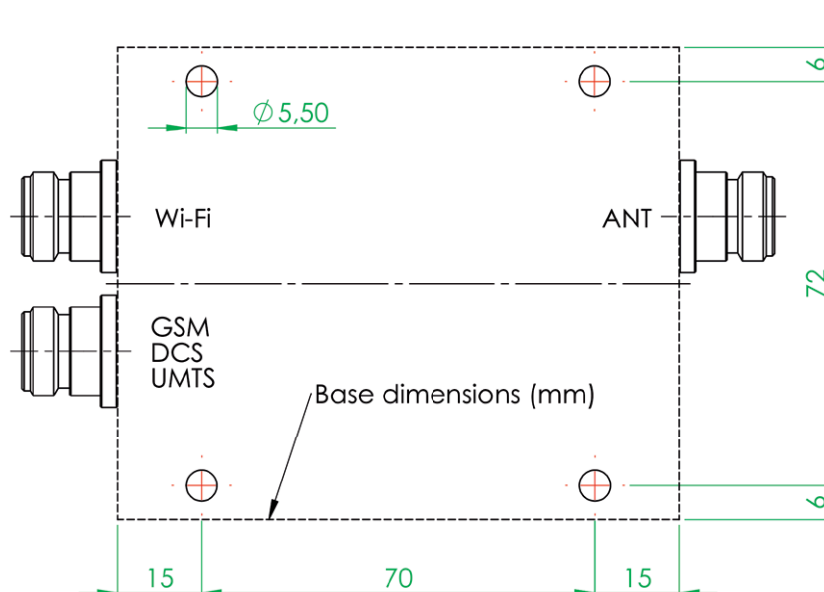


## DESCRIPTION

The diplexer allows combination and separation of signals in the low frequency band (GSM, DCS, UMTS bands) and high frequency band (WLAN band) wireless application.

In order to minimize band inter-reaction the inputs are isolated and have low insertion loss in the relevant frequency bands.

## Mounting Flange



BY



Made in Italy. We reserve the right to modify these data without any notice.