



# EXTERNAL AND INTERNAL DUAL BAND ANTENNA

870 ÷ 960 MHz, 1710 ÷ 1880 MHz

17300030  
SKEL 900/18

POLOMARCONI.IT



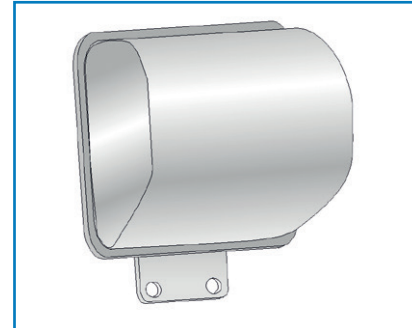
POLOMARCONI offers a very wide range of wireless products.  
Our products can be tailored according to the customer's need.

M2M

## Electrical Specifications

Frequency band (MHz)	870 ÷ 960 1710 ÷ 1880
Impedance ( $\Omega$ )	50
VSWR	$\leq 2.0:1$
Continuous Max. Power (W)	10
Polarization	linear vertical
Gain (dBi) without the 5000mm coaxial cable Insertion Losses (*)	9
HPBW ( $^{\circ}$ ) - H-plane	$\geq 30^{\circ}$
HPBW ( $^{\circ}$ ) - E-plane	$\geq 30^{\circ}$
Operation Temp. Range ( $^{\circ}\text{C}$ )	-30 ÷ +75

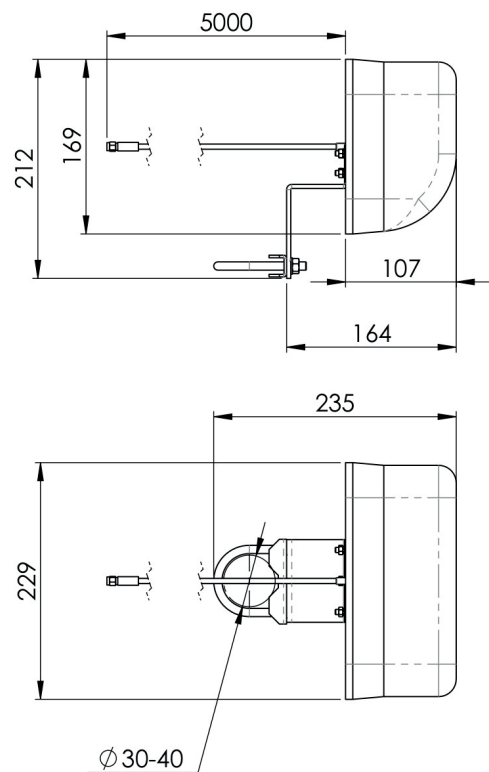
(\*) Measured gain value could have a maximum lower tolerance of 1dBi.



## Mechanical Specifications

Connector	5000mm of low loss RF coaxial cable pigtail with SMA m connector
Dimensions (mm)	see dimensional drawings
Weight (kg)	abt. 1.1
Colour	radome grey
Mounting	on a master tube with $\varnothing 30 \div 40\text{mm}$ OR on a wall

## Dimensions (mm)



BY



Made in Italy. We reserve the right to modify these data without any notice.